

- 420-12, Sandong-ri, Eumbong-myeon, Asan, Chungcheongnam-do
- Tel: 82-1544-0041 | www.jbcitygas.com



- Flat 1001, Kolon Science Valley #1, 187-10, Guro-dong, Guro-gu, Seoul
- Tel: 82-2-2191-7600 | www.jbenertek.com



The
JungBu Foundation

- 9F, Jungbu Building, 968-6, Daechi-dong, Gangnam-gu, Seoul
- Tel: 82-2-2191-7505 | www.jbfoundation.or.kr

www.jbcorporation.com

CONTENTS

- 04. CEO's message
- 06. Major history and management principles
- 08. Service areas and city gas
- 10. Safety management system
- 12. Customer satisfaction
- 14. CES
- 16. Natural gas refueling station
- 18. Social contribution
- 20. JB Enertek
- 22. The JungBu Foundation

Clean & Green

For a clean environment...
To supply clean energy...
JB Corporation is always with
our customers.



CEO's message



Since 1992, based on our management philosophy - 'Better Company Better Life' and corporate culture - 'JB Way' have established, JB Corporation has sharply developed with continuous remarkable changes.

JB Corporation has contributed to greater valuable life of customers and all its shareholders. Also, 'JB Green Narae Volunteers' has conducted to contribute to local neighborhoods.

JB Corporation will continue working harder to become a global company which satisfies our customer with valuable and better life. We promise you that clean and positive energy will be provided from our enthusiastic employees.

We will create your everyday life better and valuable.

Thank you.

한 권희

President & CEO
Han, Kwon Hee

Major history

- 2018. 09 Opened HomeMaser service
- 2018. 06 Acquired Home Cleaning Service Company 'HomeMaster'
- 2017. 03 Achieved the number of households for service exceed 500,000
- 2016. 12 Received a rating of "Excelled" of Citygas Company assessment
- 2015. 05 Opened Mobile application service
- 2014. 01 Began supplying city gas in Buyeo
- 2013. 12 Received 'Award of provision of citygas'
- 2011. 05 Began supplying city gas in Geumsan
- 2009. 10 Began CESbusiness in Cheonan Cheongsu District. Achieved 13 disaster-free periods.
- 2009. 05 Acquired city gas business rights for Sejong.
- 2007. Achieved KRW300billion in sales and the number of households for service exceeded 200,000.
- 2006. 06 Declared take off 2010 Vision.
- 2005. 11 Announced customer satisfaction management.
- 2005. 07 Began supplying city gas in Seochon.
- 2005. 06 Acquired CESbusiness rights in Cheonan Cheongsu District.
- 2005. 01 Opened Jungbu Citygas call center.
- 2004. 10 Completed Sindang CNGrefueling station.
- 2003. 06 Completed Seongseong CNGrefueling station.
- 2003. 01 Established JB Enertek.
- 2002. 09 Began supplying city gas in Nonsan and Boryeong.
- 2001. 06 Began supplying city gas for Gongju.
- 2001. Achieved KRW100billion in sales.
- 2000. Expanded areas of service.
6 regions: Boryeong, Nonsan, Geumsan, Buyeo, Seochon and Cheongyang
- 1999. Reached 100 million m³ in sales revenue.
- 1996. 05 Began supplying city gas in Yeongi.
- 1995. 11 Began supplying city gas in Asan.
- 1995. 05 Expanded service area (Gongju).
- 1993. 11 Began supplying city gas in Cheonan.
- 1992. 09 Acquired a business license for city gas (The 1st in Chungcheongnam-do).
- 1992. 06 Areas of service: Cheonan, Asan, Yeongi
Established Jungbu Citygas.



Management principles

[Green management caring for the environment]

We conduct corporate management that creates a clean and eco-friendly world.

[Clean management maintaining transparency]

We pursue a transparent and sound corporate culture between our customers, employees, and businesses.

[Customer-oriented management providing the best services]

We implement systematic management to provide the best services to ensure customer satisfaction.

[Responsible management fulfilling the company's social responsibility]

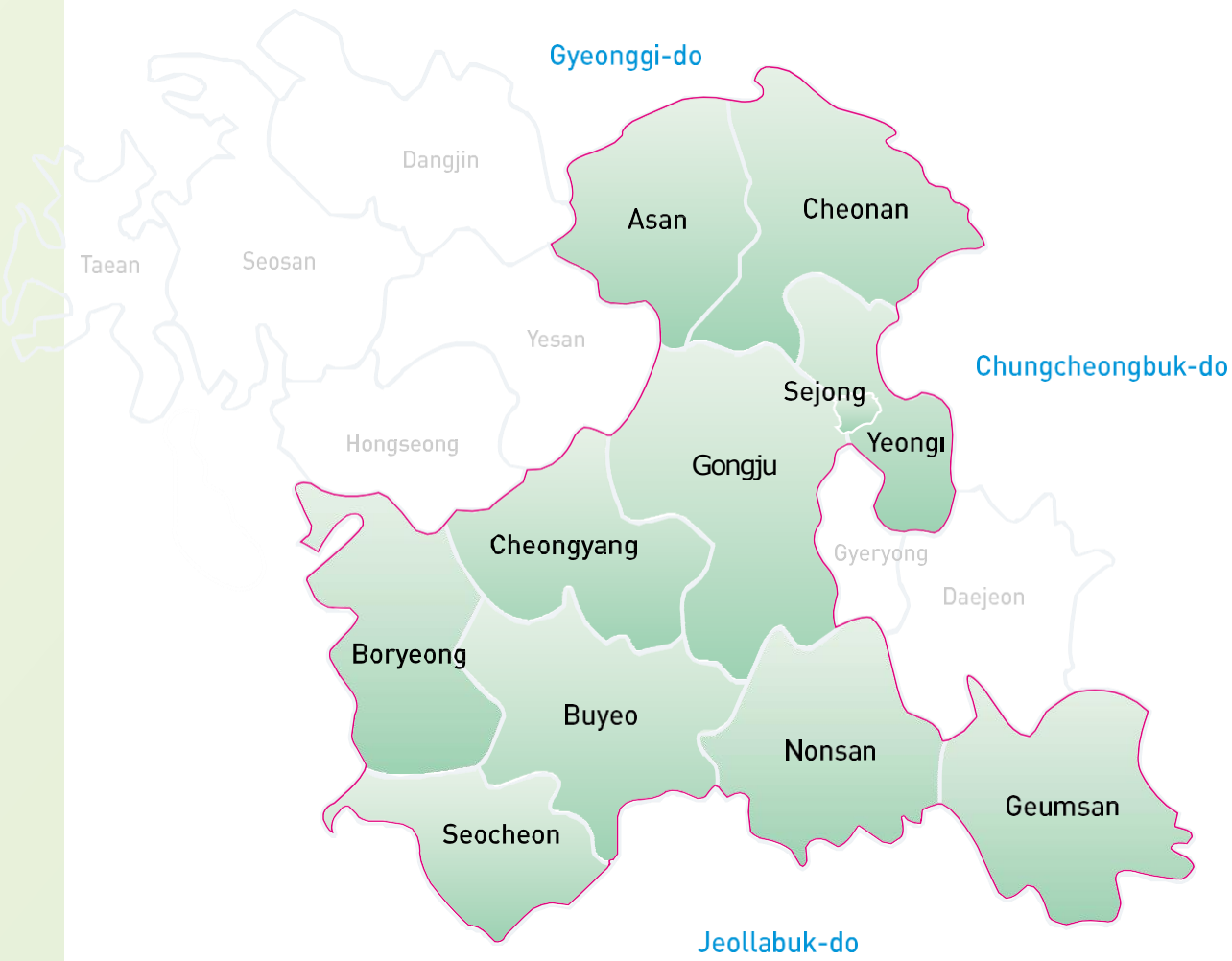
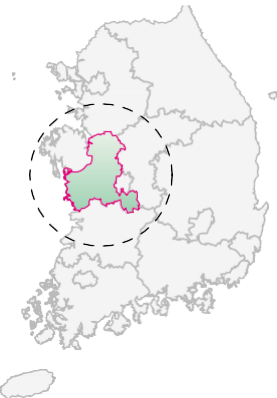
We conduct social contribution activities in the local community through a management policy promoting love and sharing.

We with the help of our customers will grow into a global leader of the energy industry!

JB Corporation is confidently striding into the future with new growth engines such as CES, renewable energy, bio-business, and more.

The service of JB Corporation covers:

Cheonan and Asan controlled by the head office;
Yeongi, Gongju and Sejong controlled by the central branch;
Boryeong, Seocheon and Cheongyang controlled by the western branch;
And Nonsan, Geumsan and Buyeo controlled by the southern branch.
We continually strive for customer convenience and the regional development.



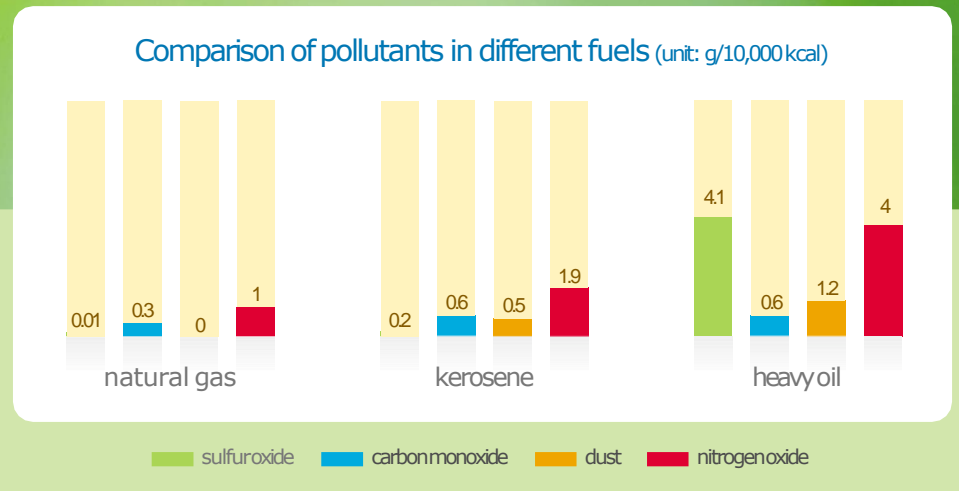
Clean city, clean environment. . . City gas is a pollution-free source of energy.

What is city gas?

Natural gas (NG) collected from gas fields is condensed into a odorless, colorless liquid known as LNG(Liquefied Natural Gas) by cooling it to -162°C and reducing the bulk by 1/600 for ease of storage and transport. The liquid is then returned to its original state and supplied as natural gas.

Characteristics of city gas

- Clean** »It is a pollution-free, clean energy source which produces few pollutants when burned.
- Safe** »It is a safe energy source which disperses readily as it is lighter than air.
- Convenient** »It is a convenient energy source stably supplied through pipeline systems.
- Economical** »It is an economical energy source offering high thermal efficiency at a cheap price.



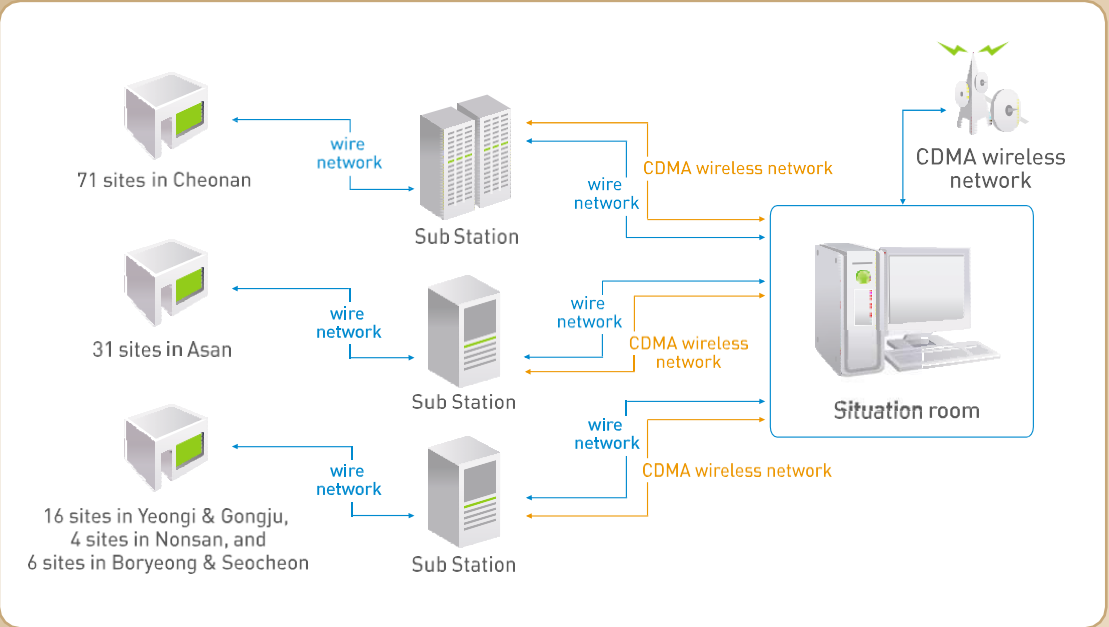
Making safe energy even safer!
We are always protecting our customers with our vigilant safety management system!



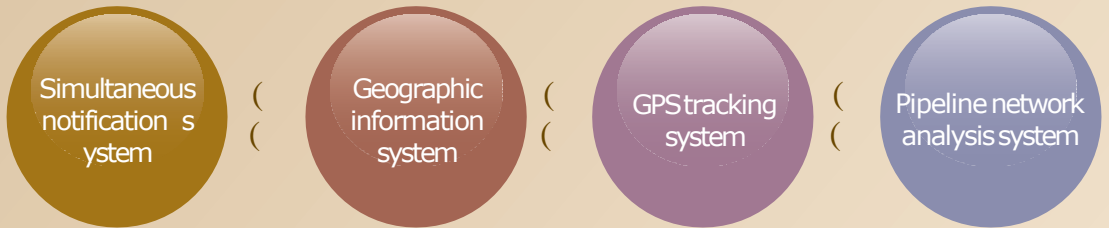
Remote monitor & control system

Our state-of-the-art safety system remotely monitors safety of the local distribution station and gas pressure regulating stations through wire networks and CDMA wireless networks.

- 1 local distribution station and 128 gas pressure regulating stations (73 sites above ground / 55 sites below ground)
- Items for remote monitoring: gas pressure, leakage, safety slam-shut valve (SSV), opening & closing of the door, cathodic protection, communication, electricity, RTU outer box, interior and exterior CCTV in the local distribution station, quantity of gas supply, and MOV



| Other safety management systems |



Contact us through our call center and website!
We will serve you 365 days a year and 24 hours a day!



JB Corporation Customer Center

The customer center takes care of the safety of city gas within the service areas of JB Corporation.

Forward your inquiries about the city gas service to our call center (1544-0041) or website (www.jbcorporation.com) for prompt and kind service.

| Major works of the customer center |

- 1 Conduct safety inspection for city gas facilities.
- 2 Replace gasmeters.
- 3 Read gas meters and billing.
- 4 Connect and remove gas pipes for gas boilers and gas burners.
- 5 Handle customer complaints.

| Customer Centers |

Cheonan : Eastern Customer Center, Western Customer Center, Northern Customer Center
Asan : Asan Customer Center
Sejong : Sejong Customer Center
Gongju : Gongju Customer Center
Nonsan : Nonsan Customer Center
Boryeong and Seochon : Boryeong Customer Center





Save energy and make a pleasant city...
CES is a new energy supply system.

The CES project

Community Energy Supply System(CES) is a new energy supply system which directly supplies customers with heat and electricity produced in CES facilities.

The CES project in the Cheonan Cheongsu District



| Summary of construction |

- Area of a lot : 8,118㎡
- Total floor area : 4,602㎡
- Construction size : 2- story above and 1- story below ground
- Completion : Oct. 15,2009

| Status of facilities |

- Capacity of power plant facilities : 25.2 MW
- Heat Only Boiler(HOB) : 60Gcal /h
- Heat storage tank : 2,380㎡
- Heat pipelines : 4,539m× 2 (500A~50A)
- Electricity distribution lines : 84,000m (100mm~175mm)

| Volume of supply of heat and electricity |

- Heat : 9,139 households (apartments, government offices, and stores)
- Electricity : 10,656 households (apartments, government offices, stores, and homes)

A society with a warm heart filled
with love and sharing!
A joyful society filled with the happiness
and pleasure of living together!

JB Corporation established the "JB Green Narae volunteers" and has conducted social contribution activities in local communities and society at large. We will continue making our best efforts to contribute to the local neighborhoods with not only financial support but also volunteering activities.



‡ **Social welfare assistance services** are used to contribute to society!

- Holding Jungbu Concerts
- Delivering Love Lunches
- Sponsoring Cheonan-Asan volunteer fairs
- Assisting Youth e-mentoring Programs (Tortee)
- The Love Coins donation Program (Chungnam CCK(Community Chest of Korea))

‡ **Scholarship funds and sponsorship programs** are shared with neighbors in need!

- Helping those in need: the whole area of Chungcheongnam-do
- Scholarship funds and the School Uniform Assistance Program
- Donations to the social welfare foundation: The JungBu Foundation
- Sponsoring the Mt. Gwangdeok Ecology Education Center
- Sponsoring social welfare facilities with rice donation

‡ **Supporting safety cultural activities** makes gas safety a part of our lives!

- Youth safety poster & writing contest
- Street campaign for the safety of gas
- Safety inspection service
- Training the gas safety managers of companies

‡ **Supporting disaster restoration** efforts sympathizing with the victims of natural disaster!

- Supporting regions hit by heavy snowfall in Gongju, Chungcheongnam-do
- Voluntary clean-up service at the oil spill in Taean, Chungcheongnam-do



Major businesses

| Gas equipment & machinery |

As a company specializing in gas equipment & machinery, the company is leading the standardization in Korea.

- ▢ Below ground gas pressure regulators, temperature & pressure correction devices, KOLAS national accreditation institute, gas meters.

| Cogeneration |

The company is leading CHP Plants with the best efficiency and high economic productivity.

- ▢ Gas engines for power plants and the equipment installation of CHP plants.

| Air conditioning and renewable energy |

Our company is taking the initiative in creating a pleasant environment as a Total Solution Provider for air conditioning systems.

- ▢ Heating and cooling systems with geothermal heat pumps, GHP/EHP, and a certificate of registered engineering company of KENCA (Korea Engineering & Consulting Association).

| Energy diagnosis |

As the 1st class company for energy diagnosis, the company maximizes the efficiency of energy facilities.

- ▢ The management and diagnosis of energy, ESCO business, CDM business consulting.

A Technology - Oriented Company

At the core of technology, you find 『JB Enertek』

JB Enertek provides a Total Solution for equipment and machinery in the energy industry. We continue to grow through an improved R&D base, our technological know-how, and capabilities of our superior company workforce.



We are eager to create a society of warm hearts filled with love and the spirit of sharing. _ The JungBu Foundation

- Supporting social welfare programs in the local community
- Assisting the staff in charge
- Sponsoring environmental and cultural programs
- Administering welfare centers
- Granting scholarships

The JungBu Foundation is supported by JB Corporation which puts a clean environment first.



The JungBu Foundation



The JungBu Foundation is a private, independent foundation that supports social welfare programs and welfare centers in order to create a culture of sharing.